

# PlantTalk: AssetTrack

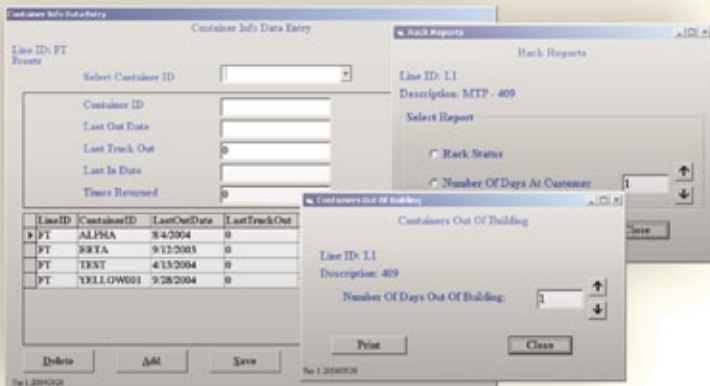


Datanational's asset tracking solution includes scanning/reading and capturing the unique asset ID (container ID) with every shipment and scanning/reading them again as they are received back from the customer or another facility. Reporting and inquiries are available over the pre-selected timeframes to identify any assets that are still out in circulation past their usual return timeframe. This gives your company the ability to proactively contact your customer or your transportation company and check on the status of the asset(s) in question.



## PlantTalk:AssetTrack features the following functionality:

- Enter/update options for maintaining returnable asset data
- Printing of uniquely identified barcode labels for assets
- Outbound and inbound scanning of barcoded asset labels
- Reporting for assets present in the system by asset ID
- Reporting for assets not received back after a user-defined number of days



## Software Built Around You

Shop floor automation means enabling collaboration between your shop floor machines and equipment, your business systems, suppliers, customers, and people. This can be achieved by focusing on a very specific area of your operation, or can be implemented across your entire plant floor or extended enterprise.

Datanational specializes in design, development, implementation and support of complete solutions for your shop floor. Solutions of this type require the skills to integrate the machines, tools and production report and alert systems with communications equipment and ERP/MRP systems to inform and guide your employees. Our system is field-tested and customer-endorsed. PlantTalk®:MES is supported 24/7 by Datanational's support & development team.

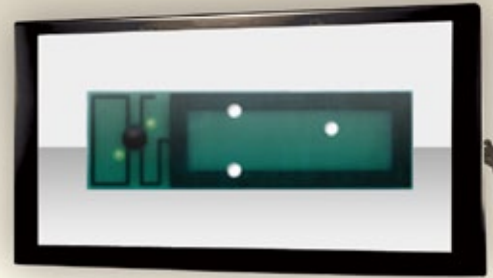


## Solution Building Blocks

The entire solution consists of several required and some optional solution areas. Besides the application software, there are several hardware components and professional installation services that enable a successful implementation.

## RFID (Radio Requency Identification) Tags

The Intermec 915 MHz Container Tag is a high-performance durable product and one of the most versatile designs in the portfolio due to its consistent performance with a wide range of materials. Typical applications include pallet, carton and container tracking.



## Fixed RFID Reader

The Intermec IF30 is a cost-effective, high performance fixed reader that reliably reads and writes UHF RFID tags in "RF noisy" environments. The IF30's receive sensitivity enables large populations of tags to be interrogated at high speeds, which is critical to many use cases involving dock doors. In addition to reading tags at distances over 15 feet, it can filter tag data to prevent sending redundant information to the host.



## RFID Antenna

The Intellitag RFID antenna family offers a variety of gain, polarization and radiation pattern options. This antenna is designed for fixed and some vehicle mount applications.



## Barcode Printer

Barcode printers are used to print unique serialized barcoded rack (container) labels. In RFID applications, smart labels can be printed, containing an embedded RFID tag for both visual and RFID detection. The images bellow show the front and back side of a smart label with a visible embedded RFID tag.



Front



Back

